

USER MANUAL

# IoC-View Graph v.1.4.1

Morpheus-Medical

Tel: +34-93.309.06.68 • Fax: +34.93.401.97.62 • email: [info@morpheus-medical.com](mailto:info@morpheus-medical.com)

This manual is published by Morpheus-Medical who reserves the right to improve and modify the contents without prior notice. Modifications will, however, be published in future editions of this manual. All rights reserved.

IoC-View Monitor & IoC are trademarks of Morpheus-Medical

## Content

1. Indications for Use .....	4
1.1 Features.....	4
1.2 How it Works .....	4
1.3 Compatibility .....	4
2. Settings.....	4
2.1 Communication Port .....	4
2.2 Filename .....	5
3. Start Capturing Data from Monitor .....	6
3.1 Start Capturing .....	7
3.2 The Capture window .....	7
3.2.1 Parameters .....	7
3.2.2 EEG Waveform .....	8
3.2.3 Trend Graph .....	8
3.2.4 User events.....	8
4. Software prerequisites - .Net Framework .....	9

# 1. Indications for use

## 1.1 Features

- Bluetooth online data capture from the IoC-View Monitor.
- Index of consciousness (IoC), Electromyography (EMG%), Signal Quality Index (SQI), and EEG suppression rate (ESR) values parameter capture.
- User event labeling with notes
- Display of trends curves for IoC, EMG%, ESR, SQI (user selectable)
- Display of EEG waveform.
- Smart scan of all communications port(s) available on the computer.

## 1.2 How it works

Wireless exchange of data takes place between the IoC-View™ Monitor and the IoC-View™ Graph v.1.4.1 Software. The IoC-View Monitor is connected to a Windows® computer or laptop hosting the IoC-View™ Graph v.1.4.1 Software through a Bluetooth communication. All the processing of parameters and waveforms takes place in the IoC-View™ Monitor. IoC-View™ Graph Software does not change / delete the data received from the IoC-View™ Monitor.

## 1.3 Compatibility

Windows vista is required.

# 2. Settings

It is possible to set the following properties for the program:

- Communication port – set which communication port to use by default.
- Filename – set file name to store recorded data.

The settings can only be changed when the program is not recording or visualizing data.

## 2.1 Communication Port

Before running IoC-View Graph Software for the first time a communication port must be selected, please respect the following steps:

- Make sure the loC-View and your computer are at the correct distance apart (max. 10 meters/ 33 feet).
- You have to discover and create a Bluetooth connection with Bluetooth Device wizard on windows software before running loC-View Graph Software. The passkey or pin use for each loC-View is the last 3 digits of theirs serial number. You can get information about this topic at <http://windowshelp.microsoft.com> looking for what is Bluetooth wireless technology.
- Open the loC-View Graph program.
- Press the select COM to display port list of the computer and select the communication port to use.

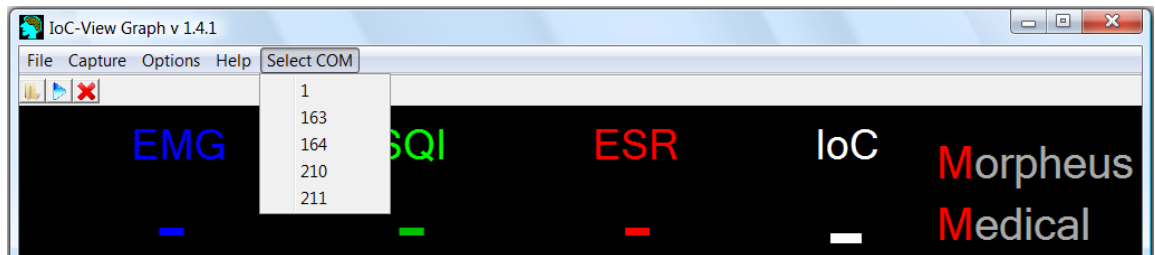


Figure 1. The Select COM menu

- The selected port must be the outgoing port corresponding with the loC-View Monitor selected.
- If experiencing problems with the connection to the loC-View Monitor use the Bluetooth software on windows to check the status of the communication.

## 2.2 Filename

Use the “File | Filename” menu or press the Filename button to set the Data Folder and give a file name which the program will use to save the recorded data.

Create a new folder by using the Make New Folder option.

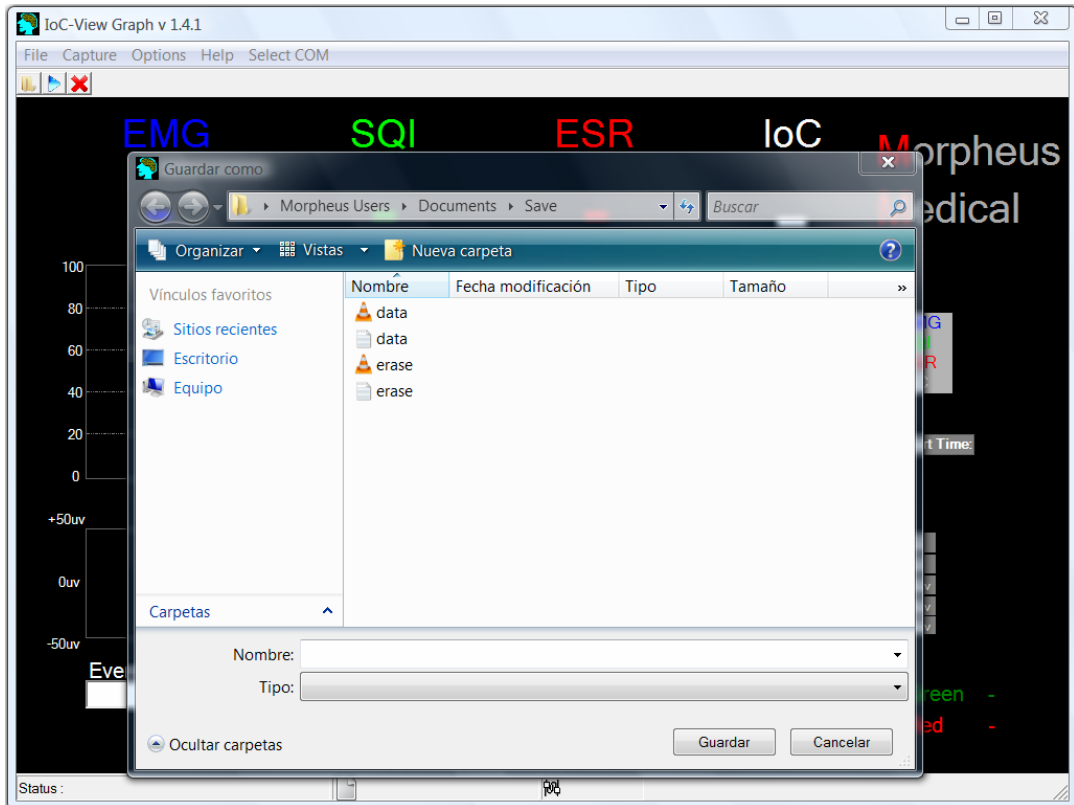


Figure 2. Select File name and folder to use as data folder and save the recorded data.

The program will create two files, one with the time and IoC indexes, IOC, EMG, ESR and SQI in a ASCII format and another one with the EEG waveform stored in binary format.

- hh: the hour when the capture started
- mm: the minute when the capture started
- ss: the second when the capture started

All users on the computer use the selected folder. Do not select a folder in your private working area if other users have to access the IoC-View Graph Files.

### 3. Start Capturing Data from IoC-View Monitor

This section describes which functionality is available when capturing real-time data from the IoC-View Monitor and how to use these functions.

## 3.1 Start Capturing

- Use the “Capture | Start” menu or “Start button” to start capturing data.



Figure 3. Start Capturing Data

- If a message displaying “No Data” is shown in the status box, it indicates that the IoC-View Graph Software cannot receive any data on the selected communication port.
- If a message displaying “Connecting,...” is shown, it indicates that the IoC-View Graph Software is connected to the IoC-View Monitor and ready for capturing data.

## 3.2 The Capture Window

The capture window has 4 main components:

- Parameters
- EEG Waveform
- Trend Graph
- User Events

### 3.2.1 Parameters

The available Index Parameters are:

- EMG: Electromyogram
- SQI: Signal Quality Index
- ESR: EEG Suppression rate
- IoC: Index of Consciousness

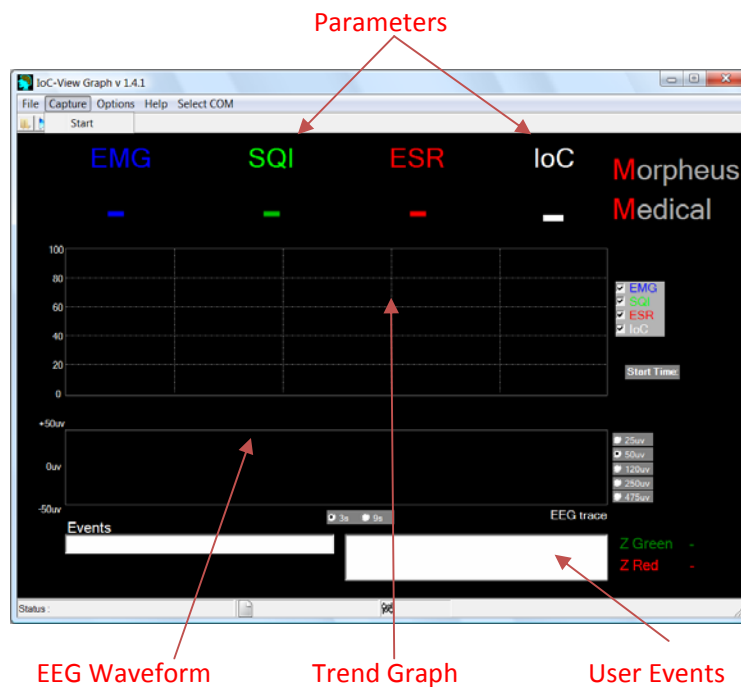


Figure 4. IoC-View Graph Capture window.

### 3.2.2 EEG Waveform

The EEG Waveform shows 3 or 9 seconds of EEG Waveform data with amplitude from  $\pm 25\mu\text{V}$ ,  $\pm 50\mu\text{V}$ ,  $\pm 125\mu\text{V}$ ,  $\pm 250\mu\text{V}$  and  $\pm 475\mu\text{V}$  depending on the selected amplitude button.

### 3.2.3 Trend Graph

Displays the IoC, ESR, EMG, and SQI as curves.

### 3.2.4 User Events

The user can write commentaries about the recording. They are added to the file name with TXT extension.

## 4. Software Prerequisites - .Net Framework

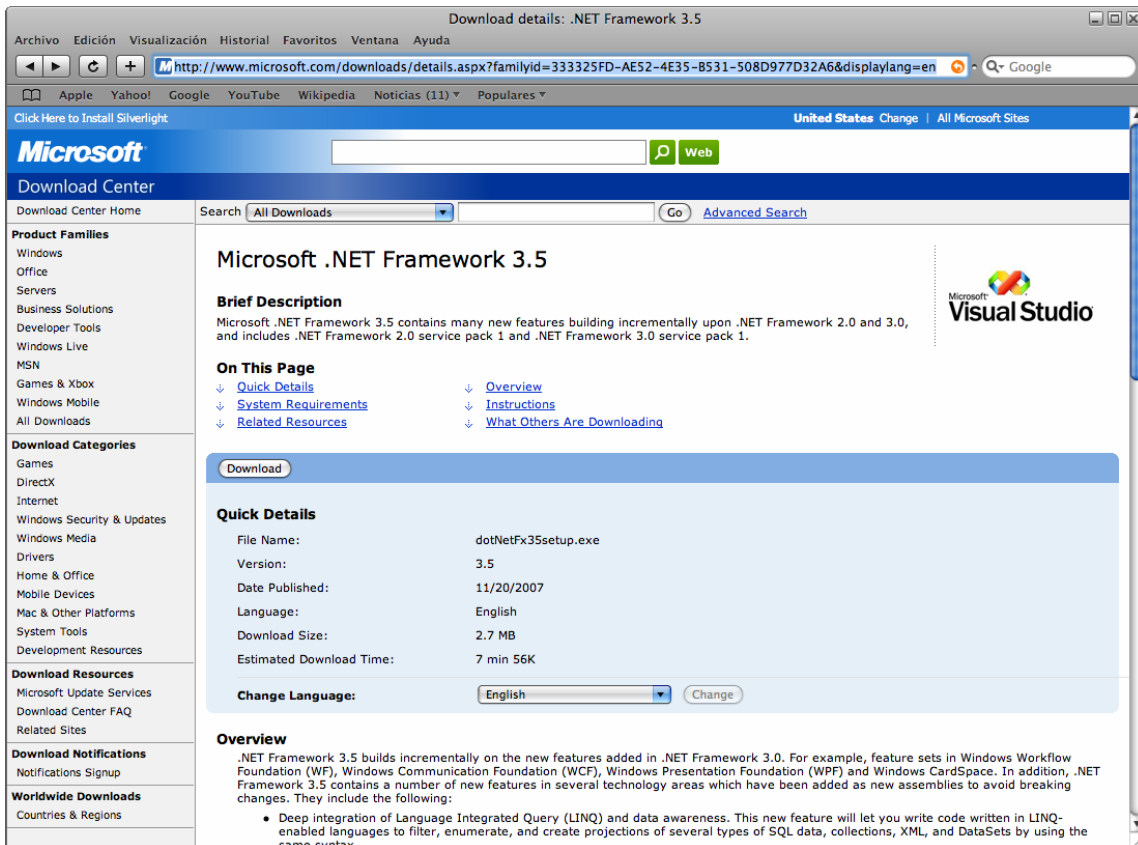
The IoC-View Graph was programmed in Visual Basic for .NET framework version 1.1. The following steps should be carried out.

If your PC/laptop does not have .NET framework version 3.5 installed then download the setup file (dotnetfx.exe) directly from Microsoft.

<http://www.microsoft.com/downloads/details.aspx?familyid=333325FD-AE52-4E35-B531-508D977D32A6&displaylang=en>

(The dotnetfx.exe can also be obtained from Morpheus Medical in case the download is not available, however the file is too large for e-mail)

The following page should appear, where you choose DOWNLOAD



The screenshot shows a web browser window displaying the Microsoft .NET Framework 3.5 download page. The browser's address bar shows the URL: <http://www.microsoft.com/downloads/details.aspx?familyid=333325FD-AE52-4E35-B531-508D977D32A6&displaylang=en>. The page title is "Download details: .NET Framework 3.5". The Microsoft logo is visible at the top left, and the "Download Center" navigation bar is at the top. The main content area is titled "Microsoft .NET Framework 3.5" and includes a "Brief Description" of the framework, a "Quick Details" section with a table of file information, and an "Overview" section. The "Quick Details" table lists the file name, version, date published, language, download size, and estimated download time. The "Overview" section describes the incremental nature of the framework and lists new features like LINQ and data awareness.

Quick Details	
File Name:	dotNetFx35setup.exe
Version:	3.5
Date Published:	11/20/2007
Language:	English
Download Size:	2.7 MB
Estimated Download Time:	7 min 56K

After the download has finished, then run the dotnetfx which will install the .NET framework, necessary to run Morpheus Medical applications.